

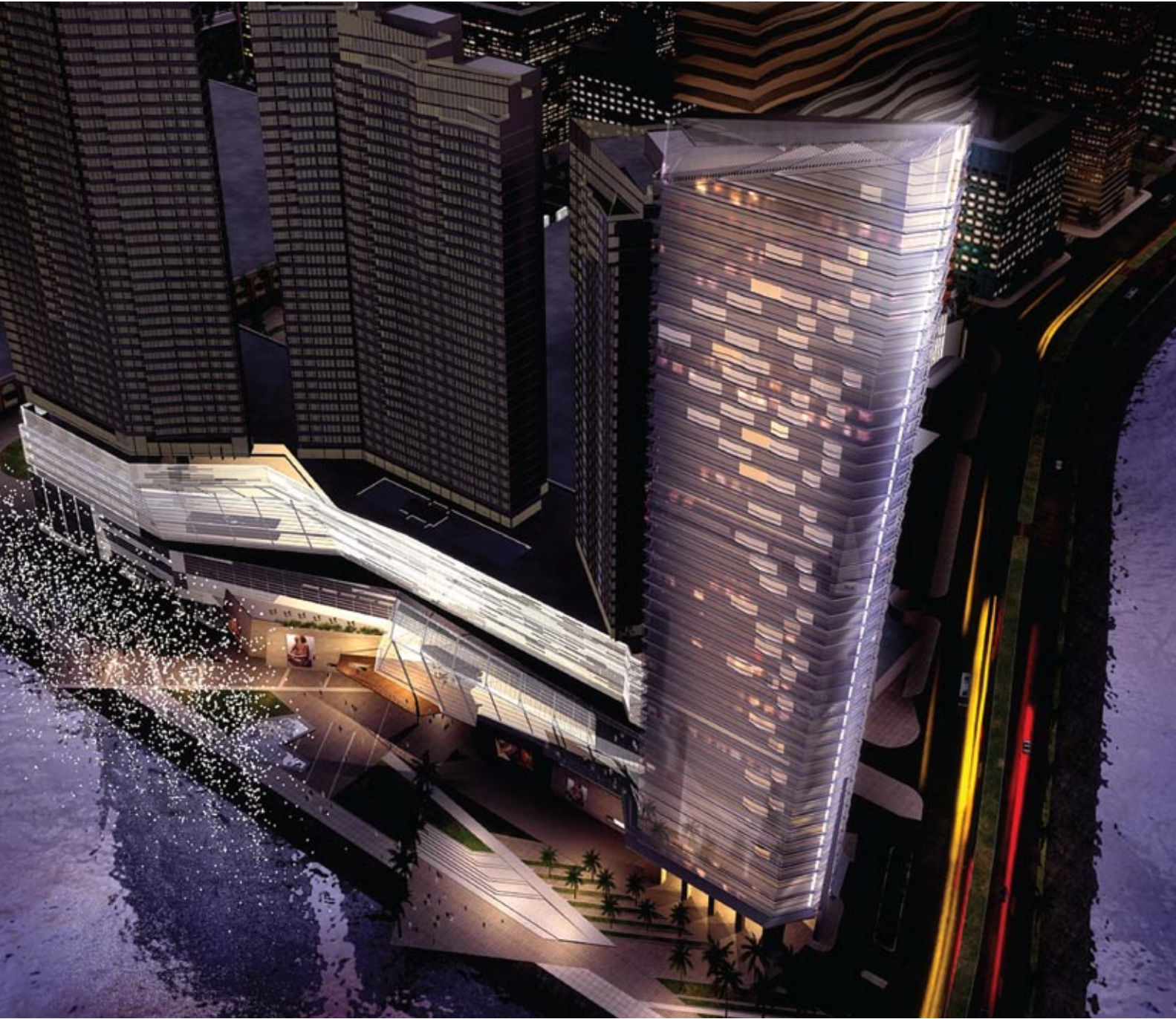


MANDARIN ORIENTAL
THE HOTEL GROUP



MANDARIN ORIENTAL, MACAU

FACT SHEET



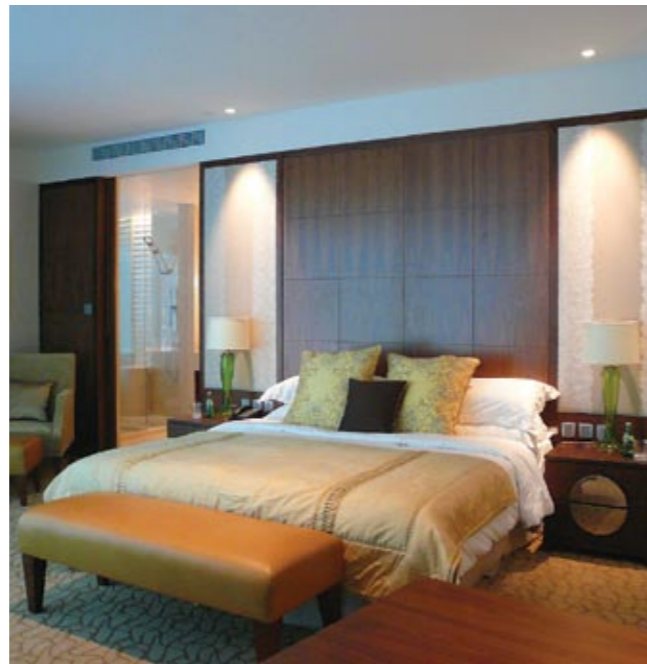
The chic, intimate and contemporary non-gaming Mandarin Oriental, Macau will be situated at the heart of the prestigious NAPE waterfront, with stunning views towards Nam Van Lake, the Macau Tower and Taipa Island.

FACT SHEET



LOCATION

- Part of a prestigious mixed-use complex which includes a residential development, extensive upscale retail centre and serviced apartments
- Adjacent to world class casinos
- Views of the harbour, Nam Van Lake, Sai Van Lake and all three bridges linking Macau to Taipa
- An ideal base to explore Macau's historic UNESCO World Heritage sites
- 10 minutes from Macau International Airport
- 5 minutes from Macau Ferry Terminal
- 60 minutes from Hong Kong (by ferry)



GUEST ROOM AND SUITES

- 213 spacious guestrooms and suites featuring avant-garde design and panoramic views of Macau
- Mandarin Oriental's renowned customer-centric technology and sophisticated in-room entertainment systems



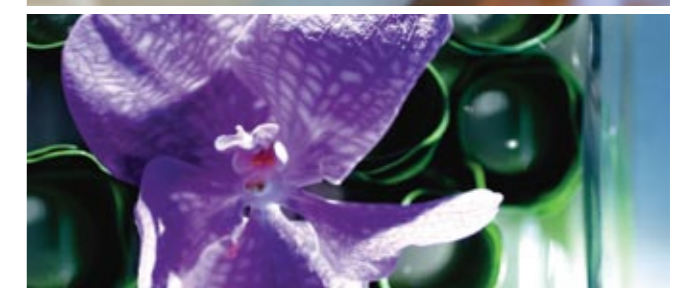
RESTAURANT AND BARS

- The restaurant offers chic all-day dining, with four private dining areas including a chef's table
- A spacious bar with three separate areas for coffee, cocktails and Champagne, with fabulous views of Nam Van Lake and evening sunsets
- The hotel Lobby Lounge and Cake Shop offers a more casual rendezvous spot with a vast selection of Mandarin Oriental teas and epicurean treats



SPA & FITNESS FACILITY

- 8,900 square feet of space for rejuvenation and relaxation
- 8 private treatment rooms
- A fully-equipped Fitness and Wellness Centre
- An outdoor temperature controlled swimming pool



MEETINGS AND BANQUET VENUES

- The Ocean Room offers floor-to-ceiling glass windows with natural light and expansive views of Macau's NAPE waterfront and the sea
- Two additional versatile meeting rooms
- Meeting and banqueting facilities for up to 400 guests



BANQUET & CONFERENCE

Function Rooms	Size sq.m/sq.ft	Ceiling m/ft	Cocktail Reception	Banquet Dinner	Meeting Theatre	Meeting Classroom	Meeting U-Shape	Boardroom
Ocean Room (Ocean I+II)	320 / 3,485	3.9 / 12.8	330	200	360	162	70	85
Ocean I	170 / 1,851	3.9 / 12.8	180	110	180	90	39	48
Ocean II	150 / 1,634	3.9 / 12.8	150	90	160	72	31	31
Harbour Room	47.4 / 516	3.4 / 11.1	40	30	60	24	18	18
Bay Room	47.2 / 514	3.4 / 11.1	40	30	60	24	18	18
Harbour + Bay	94.6 / 1,030	3.4 / 11.1	90	60	120	50	36	36
Boardroom	60.0 / 653	3.4 / 11.1	-	-	-	-	-	12
Pre-function area	173 / 1,862	3.9 / 12.8	100	-	-	-	-	-

Hotel address:

Avenida Dr Sun Yat Sen, NAPE, Macau
 Telephone: +853 8805 8888
 Facsimile: +853 8805 8899
 Email: momac-reservations@mohg.com



www.mandarinoriental.com/macau